



## World Pickleball Federation Delegate Program

The governing board of the WPF welcomes you to our international organization. As a Delegate, you're an envoy of the WPF and will be expected to act in a favorable and supportive manner. Your interaction with both current and prospective pickleball players provides a tremendous opportunity to spread the WPF mission. In many ways, the future of our sport rests on your ability to spread the passion we all possess for this great game.

We congratulate and thank you for your decision to be an active and supportive Delegate of the WPF and our ongoing efforts to grow pickleball on the world stage. We're glad you share our passion and expect you will continually strive to keep the best interests of all pickleball players in mind. You are planting the seeds for a future forest of players from around the world who will enjoy the greatest game ever invented. Whether it be a family outing on a public court, a round robin at your local club or a major international event, you can be an influencer to our future.

Our objective is to continue to grow this game from youth through seniors for the physical, mental and social benefits it provides. While striving to get enough countries to adopt pickleball as a recognized sport within their country so that we may qualify, one day, for IOC inclusion. Our long-term objective is to get pickleball recognized as an Olympic event.

This document will help support your endeavours to promote and increase memberships. As a spokesperson for our organization, we encourage you to spread the word about WPF at every opportunity.

Thank you for your time and dedication to WPF and the sport of pickleball.

### WPF VISION

To ignite the global excitement, inclusive nature and lifetime benefits of pickleball.

### WPF MISSION STATEMENT

The mission of the WPF is to direct pickleball's future as a globally recognized sport.

Provide effective organizational structure and leadership while raising the visibility of pickleball through major international competitions.

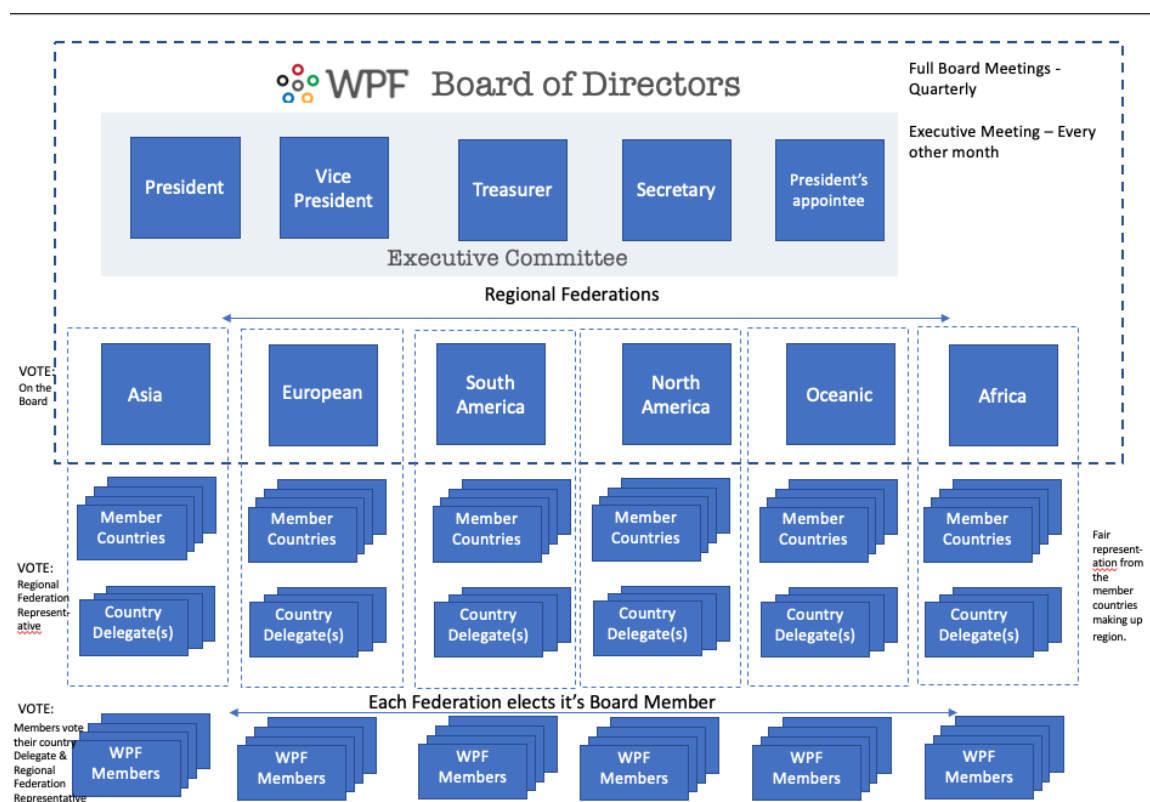
Govern the infrastructure of pickleball through coaching, equipment, rule improvements, refereeing, and event management. Manage the formula and announce the year end top pickleball players in the world.

## WPF VALUES

- Integrity
- Respect
- Excellence
- Innovation
- Collaboration

All WPF Delegates are expected to exemplify these values.

## Hierarchy of WPF



- WPF Board
- WPF Executive Committee
- Regional Federations
- Member Countries
- Country Delegate(s)
- Individual Members
- Professional Players
- Corporate Donors

## The Role of Delegates

- Delegates are volunteer representatives and unofficial spokespersons for the WPF in the geographic area they represent.
- Their primary responsibility is to promote and grow the sport of pickleball. This can be accomplished by:
  - introducing the game to new communities
  - informing your national Delegates of people of influence, you've met who may be interested in sponsorships or other revenue opportunities to assist WPF in growing pickleball in your area.
- Encourage players you meet to join WPF.
  - As a not for profit organization, we are dependent on member fee's and generous donors to assist us in developing programs to help each country and region to expand.
  - WPF is committed to exposing new communities to the top players and instructors in the world. This takes funding for travel, housing, food etc. to expose new communities to the best our sport has to offer.
- Your feedback on new clubs, places to play as well as new facilities that have been built will allow the WPF to assist you. As a passionate advocate of pickleball you can spearhead the conversion of unused tennis courts to pickleball courts or building new dedicated only pickleball courts.
- As a Delegate, wherever you go, never stop promoting the WPF and pickleball.

## Delegate Communications

You'll be listed on our website as a Delegate for your geographic area, and you'll be giving players your contact information every time you hand out your WPF business card. Your e-mail address is required.

- You need to verify and update the information on your member profile.
- The information on your member profile will be used for all communications you'll be receiving.
- You'll be contacted by players seeking information. Your timely response reflects well on you and our organization.
- You'll be reporting to your national Delegate.
- A quarterly report on your efforts and progress is required.
- The national Delegate is responsible for reviewing the efforts made by each Delegate in their region to be certain they represent the ideals of the WPF.
- We will provide a closed 'Delegate forum' on Facebook to enable Delegates to share best practises, field questions and answers to each other, establish discussion topics, etc.

## Delegates and Pickleball Related Income

- You can be both a Delegate and an entrepreneur.
- As a Delegate you are a volunteer whose mission is to promote the sport and the WPF, not your own business opportunities.
- When wearing a Delegate shirt, badge or handing out your WPF business cards, you are promoting the WPF and pickleball.
- As an entrepreneur, you cannot use your Delegate position to promote yourself or your business.
- In these instances, such as working with a vendor, or providing lessons for a fee you need to have a separate business card, email, flyer, etc.
- You cannot promote a product or service you profit from when using your position as a Delegate to unfair advantage.

## Why be a Delegate?

- Being a Delegate identifies you as a respected person in pickleball. Someone that demonstrates the WPF values and desire to grow the game in your geographic area as well as globally
- You will receive a set of WPF Delegate business cards and a WPF Badge
- Volunteering your time demonstrates your passion for the game and gives you the opportunity to work closely with your national association/federation and be part of Meet & Greet occasions
- Recognition of the work you do within WPF communications
- Opportunity to be part of a closed Delegate communication forum sharing information, best practises, etc
- Opportunity to attend global Delegate conference in person or remotely
- Opportunity to influence the global pickleball agenda
- Registration discount to WPF Tournaments

## Delegate selection process:

Either:

- A Delegate can be selected by a WPF Board member or Country NGB member but needs to be ratified by the WPF Board or regional Federation Board.
- Players desiring to become a Delegate can submit an application form to their Country NGB or Country Representative on the regional Federation Board which is then ratified by the area Federation Board.