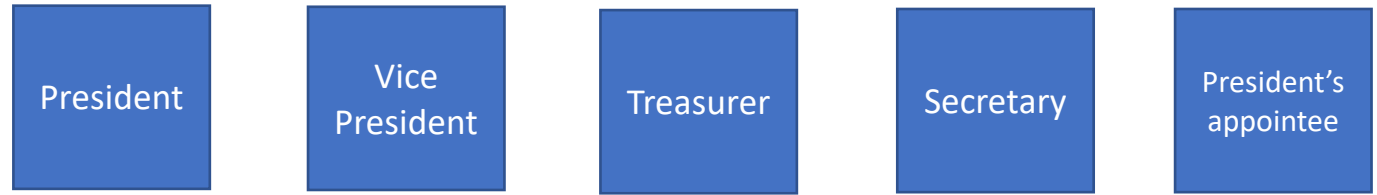
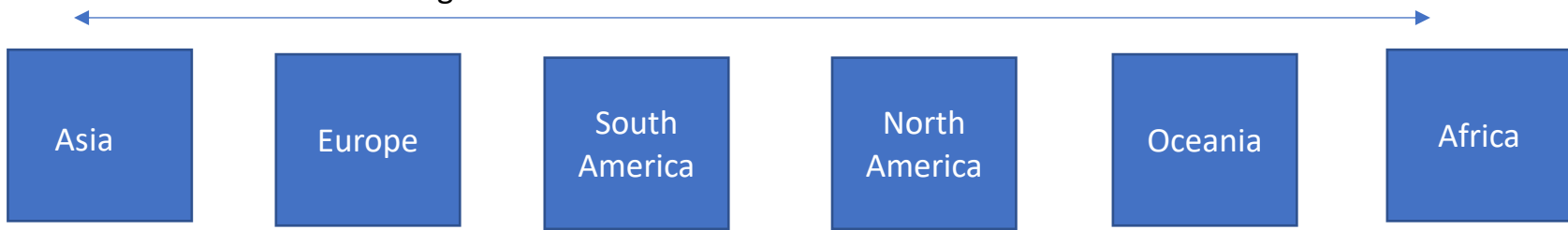




WPF Board of Directors



Regional Federations



Each Federation elects it's Board Member from candidate pool developed by the Nominating Committee

- | | | | | | |
|---|--|--|--|---|---|
| <p>Asian Federation M/ship:</p> <ul style="list-style-type: none"> • Member Country • <i>Country Delegate</i> • <i>Pro Player rep</i> • Member Country • <i>Country Delegate</i> • etc | <p>European Federation M/ship:</p> <ul style="list-style-type: none"> • Member Country • <i>Country Delegate</i> • <i>Pro Player rep</i> • Member Country • <i>Country Delegate</i> • etc | <p>South American Federation M/ship:</p> <ul style="list-style-type: none"> • Member Country • <i>Country Delegate</i> • <i>Pro Player rep</i> • Member Country • <i>Country Delegate</i> • etc | <p>North American Federation M/ship:</p> <ul style="list-style-type: none"> • Member Country • <i>Country Delegate</i> • <i>Pro Player rep</i> • Member Country • <i>Country Delegate</i> • etc | <p>Oceanic Federation M/ship:</p> <ul style="list-style-type: none"> • Member Country • <i>Country Delegate</i> • <i>Pro Player rep</i> • Member Country • <i>Country Delegate</i> • etc | <p>African Federation M/ship:</p> <ul style="list-style-type: none"> • Member Country • <i>Country Delegate</i> • <i>Pro Player rep</i> • Member Country • <i>Country Delegate</i> • etc |
|---|--|--|--|---|---|

Nomination process for Regional Federation Board Members to include country NGB membership

The Country Members; Delegates and Individual Members have voting rights to vote in their chosen representative from the candidate pool submitted by the Country Members.

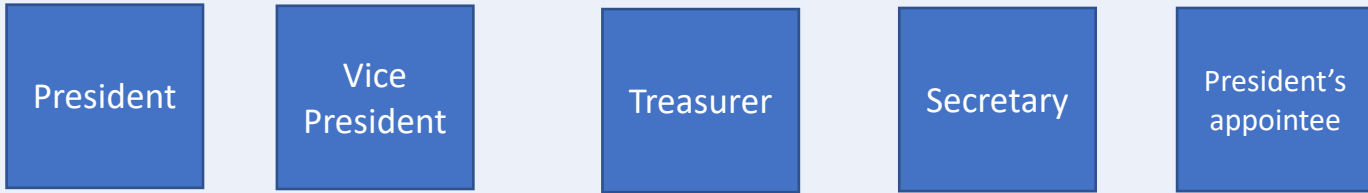
Director Development Pathway: 1. Serve minimum of 12 months as a Country Delegate 2. Serve as a Member Country Director for 12 months 3. Regional Federation Director representative on WPF Board to have served as 1 & 2 first.

 **WPF** Board of Directors

Full Board Meetings - Quarterly

Executive Meeting – Every other month

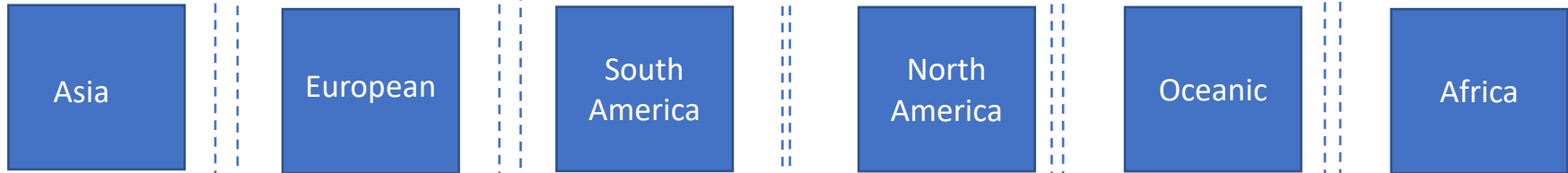
In Person (secret vote)
By Phone & Email waive right to secret vote



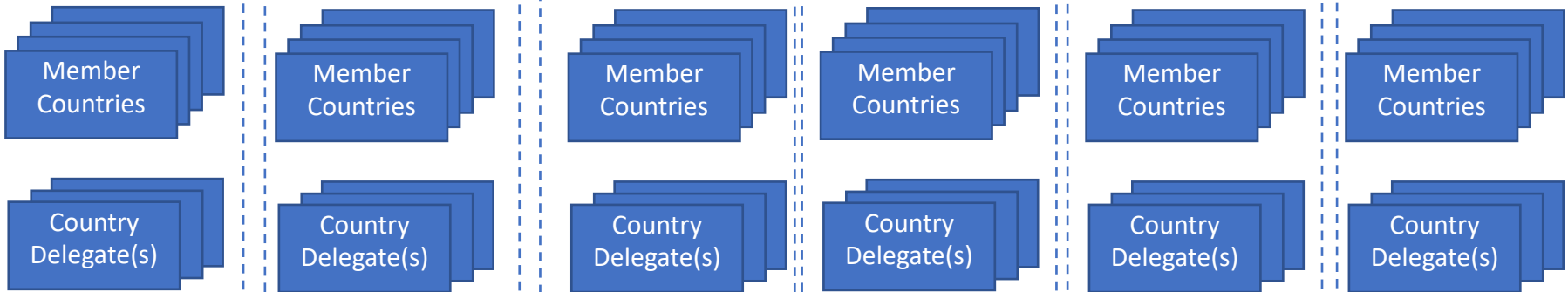
Executive Committee

Regional Federations

VOTE: On the Board



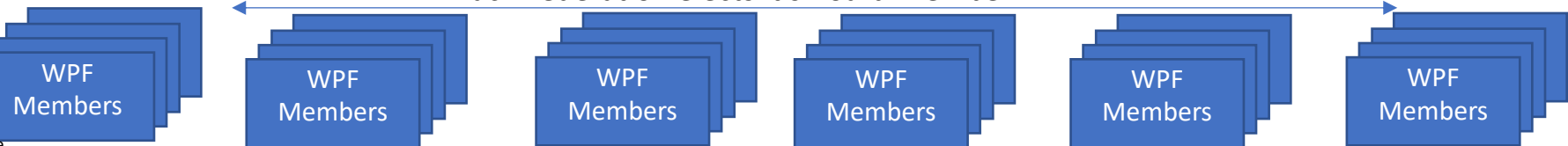
VOTE: Regional Federation Representative



Fair representation from the member countries making up region. Max 5 Directors

VOTE: Members vote their country Delegate & Regional Federation Representative

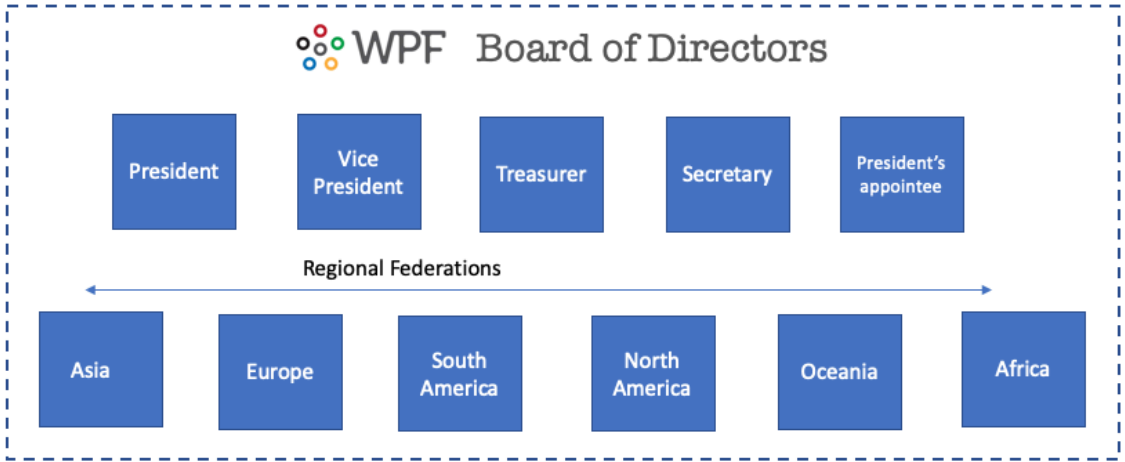
Each Federation elects it's Board Member



Quarterly BOD Meetings.

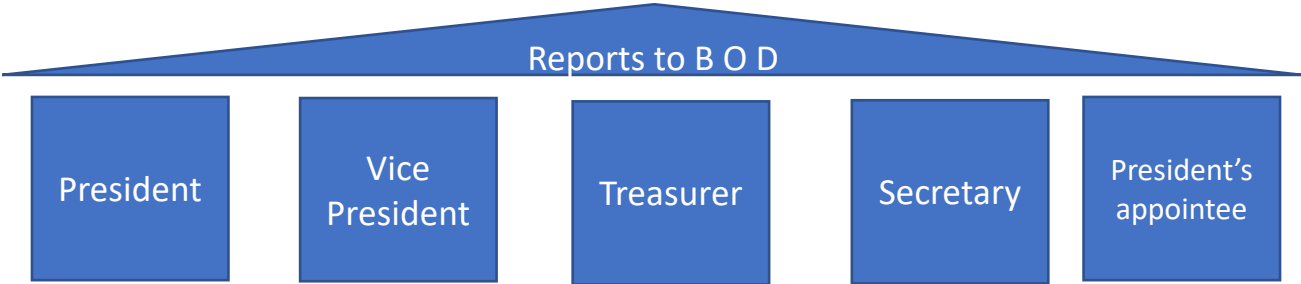
Dates published on website. At least 30 days notice (24 hours for Special meeting)
Meetings open to all unless BOD proposes to go into Executive session for confidential discussion.

Members can request to speak during first 10 minutes of Board meeting. 10/5/5 Rule applies [Can request 10 minutes as long as prior written notification is sent to President and/or 3 others. Up to 5 pages can be submitted 5 days in advance of the meeting.



Special Meetings.

Can be called by President or by 3 or more Board members. Inform via email; include purpose of meeting and suggest date/time of call. Not less than 48 hours notice.



Executive Committee/
Officers:

>\$2.5k expenditure requires approval of BOD

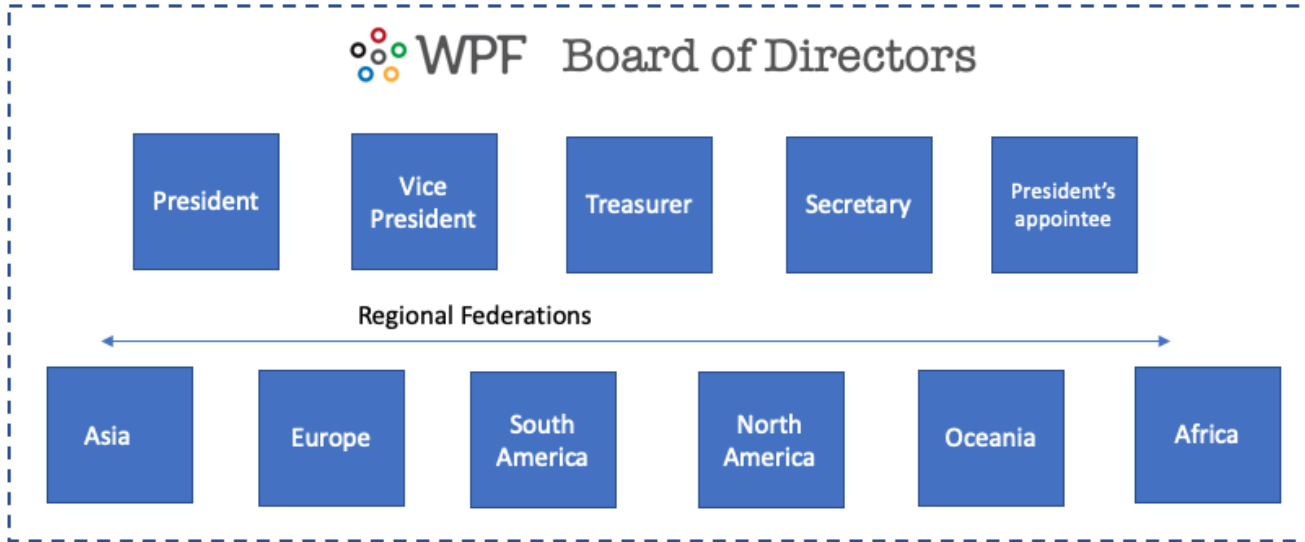
All Executive Committee meetings to have minutes distributed to the Board. Any action of Committee to be confirmed by majority vote of Board of Directors at Quarterly Meeting or Special Meeting. Responsible for the governing role of the B O D: ByLaws, Policies & Procedures Manual, Nominations Committee

Appointment Process:

Vacancies posted on website
Nomination Committee manage nominations to prepare a candidate slate.
Elected by B O D ballot Jan/Feb
Attend Feb/March meeting to observe
1 year term can be extended one year at a time by majority Board vote.
Assume role April. Defined Roles

WPF Incorporated under the Illinois Non Profit Corporation Act

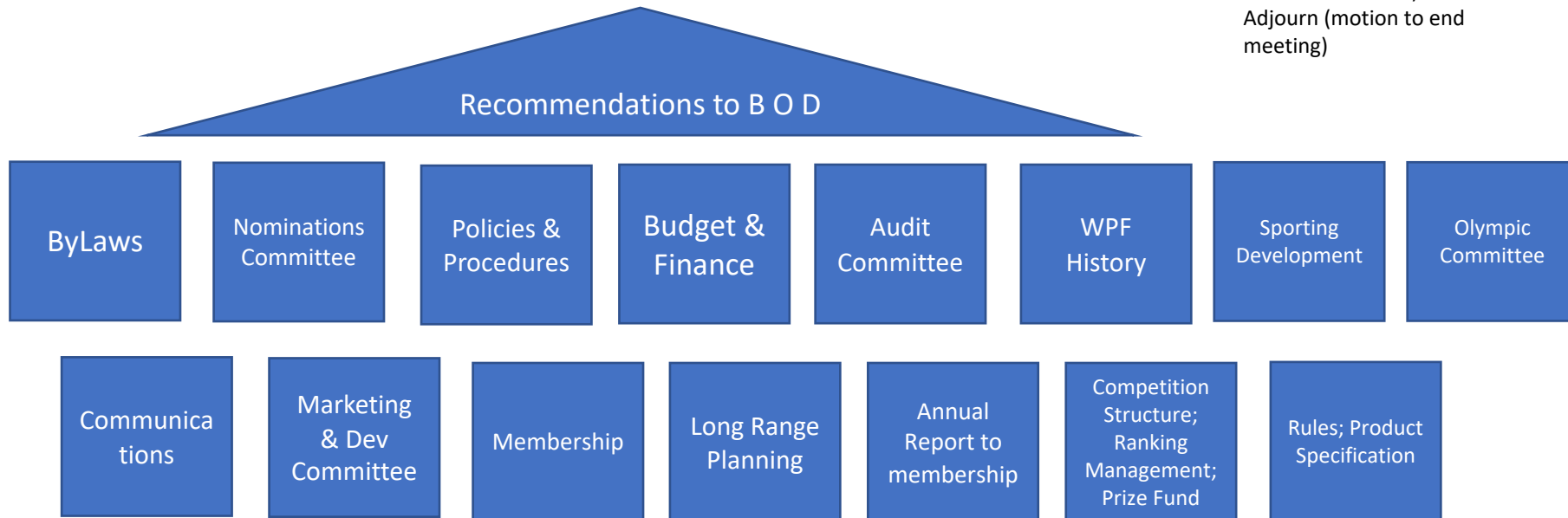
Governing Documents:
- By Laws
- Articles of Incorporation

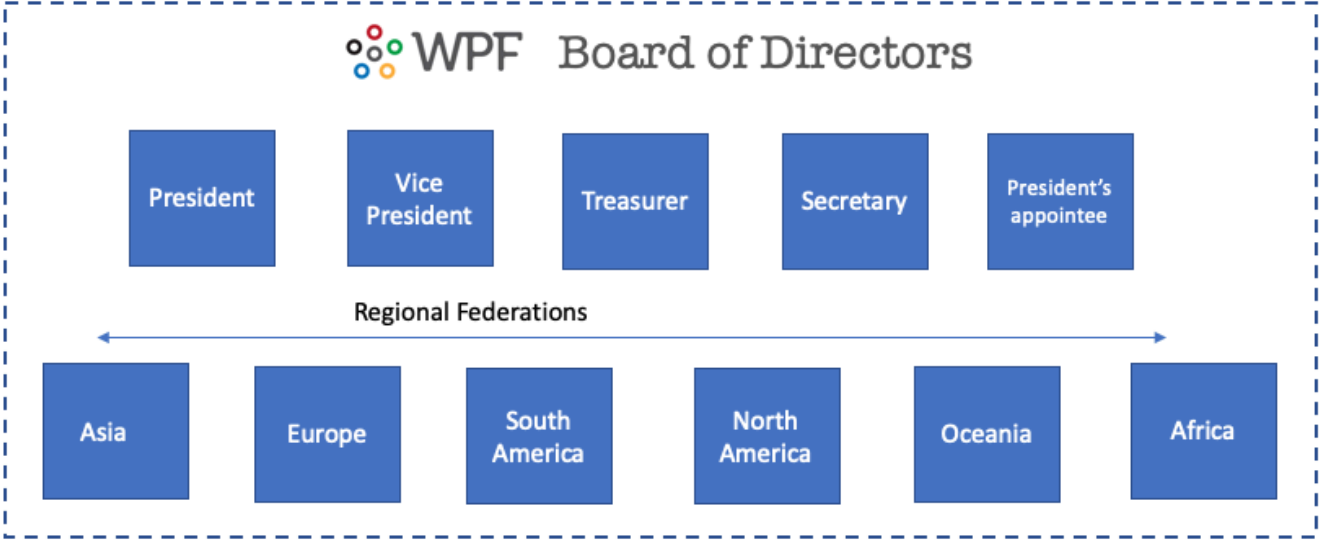


Roberts Rules of Order:
All motions need to be seconded and voted on. 2/3rds majority required.

Motion Proposed:
Pass (by majority vote)
Postpone Indefinitely
Amend (motion proposed for an amend)
Commit (motion proposal to get a committee to review and report back)
Question (to end debate immediately. If pass, the motion is voted on immediately)
Table (motion to table at a later defined date)
Adjourn (motion to end meeting)

Committees:
Chairs & designated individuals will be appointed by the President on the advice or consent of the BOD. Unless specified appointments are for 12 months.





Recommendations to B O D

Committees:
Unless specified appointments are for 12 months.



Committee will only be created if there is a need for change to bylaws. Proposed changes to be shared with membership. Period of evaluation to be provided. Refinement if necessary. Board approval.

Initial Policies & Procedures. Effective Policies & procedures; child protection; equality; anti-doping; risk management. Convene again when changes req'd

Every 2 years. Minimum 2 people from BOD plus outside firm or independent accountant

Maintaining file of clippings; photos of activities; video clips etc.

Responsible for preparation of e-updates; official contributions to publications; social media etc. Annual budget determined by the BOD

Development of a plan. Allocate a budget. Quarterly review for BOD

Put in place payment processing. Welcome /renewal comms. Maintain records. Report data to BOD

Prepare Plan; evaluate activities against plan. Recommendations to be made October mtg.

Development of report

Membership Type

Membership Focus

Country Membership

Fees due before membership starts

\$50 per annum

- Membership to WPF
- Membership to regional WPF
- **Voting rights for regional Federation elections including WPF Board members**
- Advertise your Association Tournaments on WPF
- Delegate support in your country to support your association and WPF
- Access to statistics and templates

Growing pickleball in their country
Contributing to regional think tank
Eligible to be on Regional Federation & BOD

Delegates

\$25 per annum

- Membership to WPF, regional Federation and country Association
- WPF Business Card and Badge
- **Voting rights for regional Federation elections including WPF Board members**
- Closed discussion forum for Delegates
- Eligible for Recognition/Achievement Award
- Reduced membership fee

Supporting pickleball growth in their country
Contributing to regional think tank

Individual Members

\$25 per annum

- Product Discounts
- Reduced WPF Sponsored Tournament registration fees
- **Voting rights for regional Federation elections including WPF Board members**

Supportive of pickleball growth and WPF aims
Will voice the need for changes

Professional Players

\$50 per annum

- Gender equal prize money for all WPF Tournaments
- **Vote for WPF Board position representing PPF interests**
- Creation of \$X prize fund pool for WPF Tournament circuit
- Promotional opportunities for Pro's and their brand sponsors in WPF advertising/communications [Facebook, Website, Tournaments]

Beneficiaries of Prize Fund focus
Help grow sport by supporting new countries
Will voice the need for changes

Tournament Directors

\$50 per annum

- Free listing of tournaments on WPF website
- Link to your tournament registration page
- WPF is software neutral – we do not stipulate which software to use
- Access to tournament best practices and resource guide [e.g. alternative formats pros/cons when to use/not use; access to a tournament buddy]

Collaborate within region to spread tournament timings
Eligible for WPF support package

Corporate Donors

\$1,000+

- Logo on Corporate Donations page [size determined by value of donation]
- Donation listing on WPF Financials [unless prefer not]
- Thank you on WPF newsletter
- Invite to Meet & Greets
- Listing in Corporate Directory with link to website

Supporting through funding and influencing the growth of pickleball